



Karrinyup Waters Resort



Operating for over 40 years, Karrinyup Waters Resort has thrived as one of Perth's most popular tourist parks. Located only 14km from Perth's CBD, and just 5 minutes from Trigg and Scarborough Beaches, it is a great base for self-catering tourists looking to explore Perth's local attractions. The park offers its guests all the comforts of home in its 68 self-contained cabins; each with their own parking space, the cabins feature a fully equipped kitchen with a stovetop, microwave, crockery, cooking utensils and cutlery, a bathroom, dining area and living area with reverse cycle heating and cooling, couches, LCD televisions and DVD players.

OFF PEAK SEASON DATES

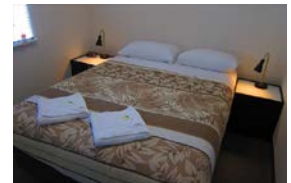
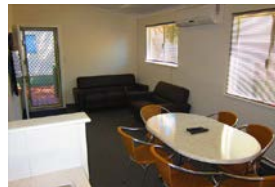
08 Oct 2016 – 22 Dec 2016
 01 Feb 2017 – 07 Apr 2017
 26 Apr 2017 – 22 Sep 2017
 08 Oct 2017 – 21 Dec 2017
 01 Feb 2018 - TBA

PEAK SEASON DATES

23 Dec 2016 – 31 Jan 2017
 08 Apr 2017 – 25 Apr 2017
 23 Sep 2017 – 07 Oct 2017
 22 Dec 2017 - 31 Jan 2018
 TBA

2 Bedroom Deluxe

| OFF PEAK SEASON | | |
|-----------------|-----------|-----------|
| | 1-6 days | 7+ days |
| 4 people | \$190 p/n | \$175 p/n |
| 5 people | \$207 p/n | \$192 p/n |
| 6 people | \$224 p/n | \$209 p/n |
| PEAK SEASON | | |
| | 1-6 days | 7+ days |
| 6 people | \$240 p/n | \$220 p/n |



Sleeping up to 6 people the 2 Bedroom Deluxe has a queen size bed in the main bedroom and two sets of bunk beds in the second bedroom. The unit has a 50-inch LED TV's with a play station; leather couches in the living area and all new fit out. This unit is popular with large families and group bookings. Please note that this style has a common wall with another cabin.

2 Bedroom Family

| OFF PEAK SEASON | | |
|-----------------|-----------|-----------|
| | 1-6 days | 7+ days |
| 4 people | \$200 p/n | \$185 p/n |
| 5 people | \$217 p/n | \$202 p/n |
| 6 people | \$234 p/n | \$219 p/n |
| PEAK SEASON | | |
| | 1-6 days | 7+ days |
| 6 people | \$250 p/n | \$235 p/n |

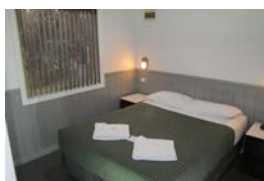


The 2 Bedroom Family Cabin (previously known as the spa units) are our largest cabins, sleeping up to 6 people. The main bedroom has a queen bed and small TV/DVD player and the second bedroom has a queen bed and a set of bunks. The living area has two leather couches and an LCD TV with a play station. These units also have a large bathroom renovated in November of 2015, which includes a free standing bath, large shower recess with walk around shower screen and a rain shower head. These units are popular with larger families and group bookings.

2 Bedroom Superior

| OFF PEAK SEASON | | |
|-----------------|-----------|-----------|
| | 1-6 days | 7+ days |
| 4 people | \$175 p/n | \$165 p/n |
| 5 people | \$192 p/n | \$182 p/n |

| PEAK SEASON | | |
|-------------|-----------|-----------|
| | 1-6 days | 7+ days |
| 5 people | \$205 p/n | \$195 p/n |



Sleeping up to 5 people these units give families and groups more room than the 2 Bedroom Standard units though still at a reasonable price. The lounge room has two separate couches and room to move. In the main bedroom is a queen bed, and in the second bedroom is a set of bunk beds and a single bed. There is one cabin in the park that has the same layout as the 2 Bedroom Superior units which is wheelchair accessible; it has been designed to ACORD guidelines.

2 Bedroom Poolside

| OFF PEAK SEASON | | |
|-----------------|-----------|-----------|
| | 1-6 days | 7+ days |
| 4 people | \$175 p/n | \$165 p/n |

| PEAK SEASON | | |
|-------------|-----------|-----------|
| | 1-6 days | 7+ days |
| 4 people | \$205 p/n | \$195 p/n |



Sleeping up to 4 people these units give families and groups more room than the 2 Bedroom Standard units though still at a reasonable price. In the main bedroom is a queen bed, and in the second bedroom there are two single beds. The living area has a leather couch and an LCD TV with a play station. In addition to the one in the living area each bedroom features its own reverse cycle heating and cooling system.

2 Bedroom Standard

| OFF PEAK SEASON | | |
|-----------------|-----------|-----------|
| | 1-6 days | 7+ days |
| 4 people | \$170 p/n | \$160 p/n |
| 5 people | \$187 p/n | \$177 p/n |

| PEAK SEASON | | |
|-------------|-----------|-----------|
| | 1-6 days | 7+ days |
| 5 people | \$195 p/n | \$185 p/n |



Sleeping up to 5 people, these units have a queen bed in the main bedroom and a single bed and set of bunks in the second bedroom. These units are the cheapest option that we have that offer two separate bedrooms. The lounge room is slightly smaller than the 2 Bedroom Superior units and has only one large couch.

1 Bedroom Family (with verandah)

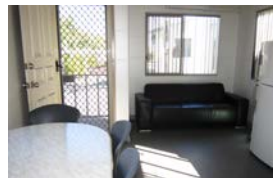
| OFF PEAK SEASON | | |
|-----------------|-----------|-----------|
| | 1-6 days | 7+ days |
| 2 people | \$140 p/n | \$130 p/n |
| 3 people | \$155 p/n | \$145 p/n |
| 4 people | \$170 p/n | \$160 p/n |
| PEAK SEASON | | |
| | 1-6 days | 7+ days |
| 4 people | \$170 p/n | \$160 p/n |



Completely renovated in winter 2015, these units are now brand new. Suitable for up to four people, these units have a queen bed in the main bedroom and a set of bunk beds in a hallway that leads to the kitchen area. These are our most popular units with travellers seeking quality budget accommodation. As part of the improvements to these units they now feature large flat screen TV's in both the bedroom and the living area.

1 Bedroom Family (without verandah)

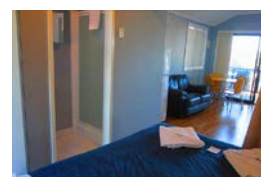
| OFF PEAK SEASON | | |
|-----------------|-----------|-----------|
| | 1-6 days | 7+ days |
| 2 people | \$135 p/n | \$125 p/n |
| 3 people | \$150 p/n | \$140 p/n |
| 4 people | \$165 p/n | \$155 p/n |
| PEAK SEASON | | |
| | 1-6 days | 7+ days |
| 4 people | \$165 p/n | \$155 p/n |



Completely renovated in winter 2015, these units are now brand new. Suitable for up to four people, these units have a queen bed in the main bedroom and a set of bunk beds in a hallway that leads to the kitchen area. These are our most popular units with travellers seeking quality budget accommodation. As part of the improvements to these units they now feature large flat screen TV's in both the bedroom and the living area.

Open Plan Family

| OFF PEAK SEASON | | |
|-----------------|-----------|-----------|
| | 1-6 days | 7+ days |
| 2 people | \$125 p/n | \$115 p/n |
| 3 people | \$140 p/n | \$130 p/n |
| 4 people | \$155 p/n | \$145 p/n |
| PEAK SEASON | | |
| | 1-6 days | 7+ days |
| 4 people | \$155 p/n | \$145 p/n |



Suitable for young families or couples on a budget, these units are one large open plan room that includes the kitchen, dining table, bunk beds and queen bed. The queen bed can be sectioned off from the rest of the room with a curtain and the TV can be rotated so that you can watch TV in bed or in the living area. Alongside the queen bed there is a sliding door that takes you into the ensuite bathroom.

1 Bedroom

| OFF PEAK SEASON | | |
|-----------------|-----------|-----------|
| | 1-6 days | 7+ days |
| 2 people | \$130 p/n | \$120 p/n |
| PEAK SEASON | | |
| | 1-6 days | 7+ days |
| 2 people | \$145 p/n | \$135 p/n |



The 1 Bedroom is a stand-alone unit which is suitable for a couple; it has one queen bed in the main bedroom with an ensuite bathroom next to the bed. Some layout variations do exist with this style of unit.

Duplex

| OFF PEAK SEASON | | |
|-----------------|-----------|-----------|
| | 1-6 days | 7+ days |
| 2 people | \$130 p/n | \$120 p/n |
| PEAK SEASON | | |
| | 1-6 days | 7+ days |
| 2 people | \$145 p/n | \$135 p/n |



Suitable for a couple, this unit has one queen bed in the main bedroom with an ensuite bathroom next to the bed. Some layout variations do exist with this style of unit. Please note that this style has a common wall with another cabin.

Motel Lakeside

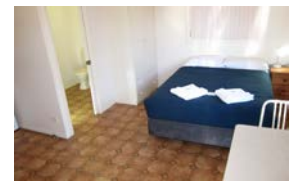
| OFF PEAK SEASON | | |
|-----------------|-----------|-----------|
| | 1-6 days | 7+ days |
| 2 people | \$130 p/n | \$120 p/n |
| PEAK SEASON | | |
| | 1-6 days | 7+ days |
| 2 people | \$145 p/n | \$135 p/n |



Located towards the bottom of the resort, near the playground and lake, this style of cabin is suitable for a couple. These units have one queen bed in an open plan room; they do not have a couch and is what people would expect of a studio style of a unit. These units are wheelchair accessible, designed to ACORD guidelines. Please note that this style has a common wall with another cabin.

Motel Standard

| OFF PEAK SEASON | | |
|-----------------|-----------|-----------|
| | 1-6 days | 7+ days |
| 2 people | \$120 p/n | \$110 p/n |
| PEAK SEASON | | |
| | 1-6 days | 7+ days |
| 2 people | \$130 p/n | \$120 p/n |



This style of cabin is suitable for a couple, with one queen bed in an open plan room; they do not have a couch and is what people would expect of a studio style of a unit. Please note that this style has a common wall with another cabin.